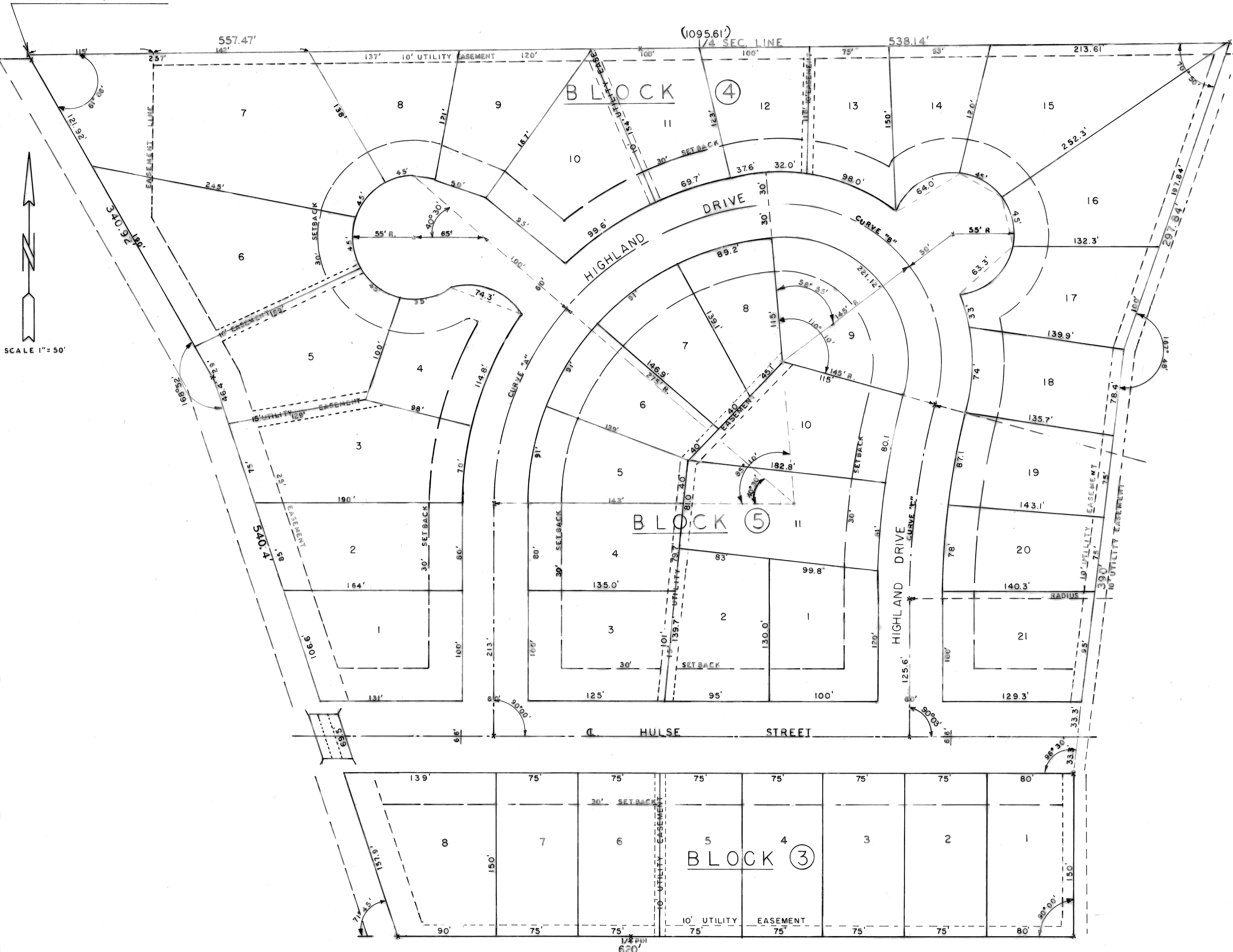
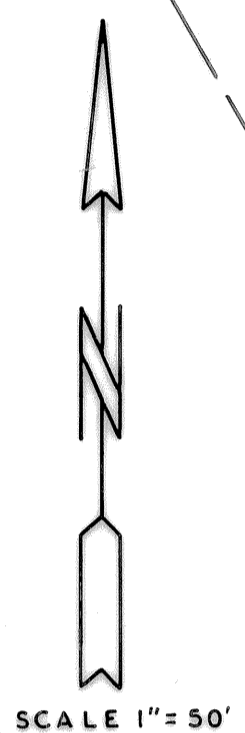


# NORTH HIGH ADDITION

MCPHERSON, KANSAS

560.0' WEST TO CENTER  
OF SECTION 21, T19S - R3W



CURVE 'A'  
(ARC)  
R = 275.0'  
D = 85°10'  
L = 408.77'  
T = 252.73'  
C = 372.16'

CURVE 'B'  
(ARC)  
R = 145.0'  
D = 110°10'  
L = 278.30'  
T = 207.724'  
C = 237.795'

CURVE 'C'  
(ARC)  
R = 675.0'  
D = 15°20'  
L = 180.64'  
T = 90.863'  
C = 180.10'

ANGLES ARE CENTER  
LINE DATA

CURVE MEASUREMENTS  
ARE ON CHORD DISTANCES

950  
State of Kansas, McPherson Co., SS:  
This instrument was filed for record  
on the 14 day of May A.D. 1970  
1965  
in book 22+23  
Register of Deeds

1/4 SEC. LINE  
620'

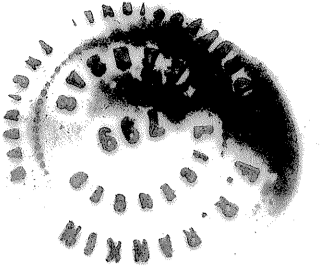
SURVEYOR'S CERTIFICATE

STATE OF KANSAS )  
COUNTY OF WOPHERSON ) SS

THIS IS TO CERTIFY THAT I, FRANCIS R. RANKIN, A LICENSED PROFESSIONAL ENGINEER OF THE STATE OF KANSAS, HAVE SUPERSEDED AND SUBSTITUTED THE FOLLOWING DESCRIBED PROPERTY, BEGINNING 500.0 FEET EAST ON QUARTER SECTION 14, FROM THE CENTER SECTION 21, TOWNSHIP 19 SOUTH, RANGE 3 WEST IN WOPHERSON COUNTY, KANSAS FOR PLACE OF BEGINNING: THENCE EAST ON QUARTER SECTION 1, 095.61 FEET; THENCE SOUTH SOUTHWEST AT AN INTERIOR ANGLE OF 70° 50' AND 297.34 FEET; THENCE SOUTHWEST AT AN INTERIOR ANGLE OF 157° 49' AND 300.0 FEET; THENCE SOUTH AT AN INTERIOR ANGLE OF 160° 30' AND 150.0 FEET; THENCE WEST AT AN INTERIOR ANGLE OF 90° 0' AND 690.0 FEET THE SAME POINT AS THE SOUTHWEST CORNER OF LOT 10, BLOCK 1, NORTH HIGH ADDITION; THENCE NORTHWESTERLY AT AN EXTERIOR ANGLE OF 71° 45' AND 540.4 FEET; THENCE NORTHWESTERLY AT AN EXTERIOR ANGLE OF 103° 52' AND 540.92 FEET TO THE PLACE OF BEGINNING. SAID TRACT CONTAINS 65 1/2 ACRES MORE OR LESS AS SHOWN ON THE PLAT WHICH IS A CORRECT REPRESENTATION OF SAID SURVEY AND SUBDIVISION SO FAR AS IT IS KNOWN TO ME. ALL DISTANCES HAVE BEEN SHOWN IN FEET AND INCHES. ALL CORNER MARKS WHETHER OLD OR NEW DISTANCES, ALL CORNERS OF THE TRACT ARE PERMANENTLY MARKED WITH STEEL PINS, SET IN CONCRETE.

GIVEN UNDER MY HAND AND SEAL AT WOPHERSON, KANSAS THIS 16th DAY OF

April, 19 70



*Francis R. Rankin*  
FRANCIS R. RANKIN  
LICENSED P.E. NO. 799 KANSAS

DEDICATION  
STATE OF KANSAS )  
COUNTY OF WOPHERSON ) SS

KNOW ALL MEN BY THESE PRESENTS, THAT SHEETS-ADAMS, INC., OWNERS AND PROPRIETORS OF THE LANDS ABOVE DESCRIBED IN THE CERTIFICATE OF SURVEYOR, HAVE CAUSED THE LANDS TO BE SURVEYED AND PLATED UNDER THE NAME OF NORTH HIGH ADDITION, TO THE CITY OF WOPHERSON, KANSAS AND HAVE CAUSED THE SAME TO BE SUBDIVIDED INTO BLOCKS, LOTS, STREETS, ALLEYS AND PUBLIC WAYS, AS SHOWN ON THE ACCOMPANYING PLAT TO THE PUBLIC USE. THE SAID NORTH HIGH ADDITION AND THE LAND CONTAINED THEREIN, IS HELD, AND SHALL BE CONVEYED SUBJECT TO THE RESERVATIONS, RESTRICTIONS, AND COVENANTS ON RECORD IN THE OFFICE OF THE REGISTER OF DEEDS OF WOPHERSON COUNTY, KANSAS

DATED AT WOPHERSON, KANSAS April 14th, 1970

*William J. Sheets*  
PRESIDENT  
*Bill R. Adams*  
SECRETARY  
SHEETS-ADAMS, INC.

STATE OF KANSAS )  
COUNTY OF WOPHERSON ) SS

BE IT REMEMBERED THAT ON THIS 14th DAY OF April, 1970 HEREBY THE UNDERSIGNED, A NOTARY PUBLIC DUTY COMMISSIONED IN AND FOR THE COUNTY AND STATE AFORESAID GAVE WILLIAM J. SHEETS, PERSONALLY KNOWN TO ME TO BE SUCH OFFICER, OF THE STATE OF KANSAS, PERSONALLY KNOWN TO ME TO BE SUCH OFFICER, AND TO BE THE SAME PERSON WHO RECEIVED AS SUCH OFFICER THE foregoing INSTRUMENT OF WRITING IN BEHALF OF SAID CORPORATION, AND HE DOES ACKNOWLEDGE THE EXECUTION OF THE SAID INSTRUMENT AND FOR SAID CORPORATION FOR THE USES AND PURPOSES THEREIN SET FORTH.

*Robert Peterson*  
NOTARY PUBLIC

MY COMMISSION EXPIRES: April 28th 1973

CITY GOVERNING BODY CERTIFICATE

STATE OF KANSAS )  
COUNTY OF WOPHERSON ) SS

I, LAMM PETERSON, THE DUTY APPOINTED, AND NOW CITY CLERK OF THE CITY OF WOPHERSON, KANSAS, DO HEREBY CERTIFY THAT THE PLANNING COMMISSION OF THE CITY OF WOPHERSON, KANSAS, RECOMMENDED APPROVAL OF THE NORTH HIGH ADDITION, PLAT TO THE CITY OF WOPHERSON, KANSAS, AND THAT SAID BOARD ADOPTED SAID RECOMMENDATION AND APPROVED SAID PLAT, AND INCORPORATED SAID APPROVAL IN THE MINUTES ON THE

20th DAY OF April, 19 70

IN WITNESS WHEREOF I HAVE SET MY NAME AND AFFIXED THE SEAL OF SAID CITY THIS 17th DAY OF April, 19 70

*Lamm Peterson*  
CITY CLERK  
CITY OF WOPHERSON, KANSAS

COUNTY GOVERNING BODY CERTIFICATE

STATE OF KANSAS )  
COUNTY OF WOPHERSON ) SS

I, WILBERT JOHNSON, THE DUTY ELECTED, QUALIFIED AND NOW ACTING COUNTY CLERK OF WOPHERSON COUNTY, KANSAS, DO HEREBY CERTIFY THAT THE ZONING BOARD OF WOPHERSON COUNTY, KANSAS RECOMMENDED APPROVAL OF THE NORTH HIGH ADDITION, PLAT TO THE CITY OF WOPHERSON, KANSAS, TO THE BOARD OF COMMISSIONERS OF WOPHERSON COUNTY, KANSAS, AND THAT SAID BOARD ADOPTED SAID RECOMMENDATION, APPROVED SAID PLAT, AND INCORPORATED SAID APPROVAL IN THEIR MINUTES ON THE 30th DAY OF April, 19 70, ALL OF WHICH IS ON FILE IN MY OFFICE.

*Wilbert Johnson*  
COUNTY CLERK  
WOPHERSON COUNTY, KANSAS



CERTIFICATE OF COUNTY ZONING BOARD

STATE OF KANSAS )  
COUNTY OF WOPHERSON ) SS

BE IT KNOWN, THAT THE PLAT OF NORTH HIGH ADDITION TO THE CITY OF WOPHERSON, KANSAS WAS SUBMITTED TO THE ZONING BOARD OF WOPHERSON COUNTY, KANSAS, AND WAS APPROVED ON THE 16th DAY OF April, 19 70

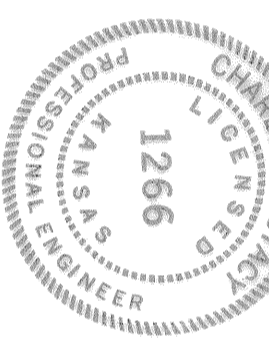
*Francis R. Rankin*  
CHAIRMAN OF ZONING BOARD  
WOPHERSON COUNTY, KANSAS

CERTIFICATE OF CITY ENGINEER

STATE OF KANSAS )  
COUNTY OF WOPHERSON ) SS

BE IT KNOWN, THAT THE PLAT OF NORTH HIGH ADDITION TO THE CITY OF WOPHERSON, KANSAS WAS SUBMITTED TO ME AND THAT THE SAME WAS APPROVED THIS 14th DAY OF April, 19 70.

*Charles A. Gray*  
CITY ENGINEER  
CITY OF WOPHERSON, KANSAS

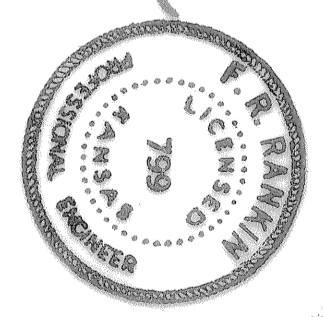


CERTIFICATE OF COUNTY ENGINEER

STATE OF KANSAS )  
COUNTY OF WOPHERSON ) SS

BE IT KNOWN, THAT THE PLAT OF NORTH HIGH ADDITION TO THE CITY OF WOPHERSON, KANSAS WAS SUBMITTED TO ME AND THAT THE SAME IS HEREBY APPROVED THIS 16th DAY OF April, 19 70.

*Francis R. Rankin*  
COUNTY ENGINEER  
WOPHERSON COUNTY, KANSAS



CERTIFICATE OF CITY ATTORNEY

STATE OF KANSAS )  
COUNTY OF WOPHERSON ) SS

BE IT KNOWN, THAT THE PLAT OF NORTH HIGH ADDITION TO THE CITY OF WOPHERSON, KANSAS WAS SUBMITTED TO ME, AND THAT THE SAME IS HEREBY APPROVED THIS 16th DAY OF April, 19 70.

*Robert Peterson*  
CITY ATTORNEY  
CITY OF WOPHERSON, KANSAS

CERTIFICATE OF PLANNING COMMISSION

STATE OF KANSAS )  
COUNTY OF WOPHERSON ) SS

BE IT KNOWN, THAT THE PLAT OF NORTH HIGH ADDITION TO THE CITY OF WOPHERSON, KANSAS WAS SUBMITTED TO ME AND APPROVED BY THE PLANNING COMMISSION OF THE CITY OF WOPHERSON, KANSAS ON THIS 14th DAY OF April, 19 70.

*Ray S. Kamm*  
CHAIRMAN OF PLANNING COMMISSION  
CITY OF WOPHERSON, KANSAS

CERTIFICATE OF COUNTY ATTORNEY

STATE OF KANSAS )  
COUNTY OF WOPHERSON ) SS

BE IT KNOWN, THAT THE PLAT OF NORTH HIGH ADDITION TO THE CITY OF WOPHERSON, KANSAS WAS SUBMITTED TO ME, AND THAT THE SAME IS HEREBY APPROVED THIS 23rd DAY OF April, 19 70.

*Robert Peterson*  
COUNTY ATTORNEY  
COUNTY OF WOPHERSON, KANSAS

CERTIFICATE OF GENERAL MANAGER

STATE OF KANSAS )  
COUNTY OF WOPHERSON ) SS

BE IT KNOWN, THAT THE PLAT OF NORTH HIGH ADDITION TO THE CITY OF WOPHERSON, KANSAS WAS SUBMITTED TO ME, AND THAT THE SAME IS HEREBY APPROVED THIS 24th DAY OF April, 19 70.

*Robert Peterson*  
GENERAL MANAGER  
CITY OF WOPHERSON, KANSAS